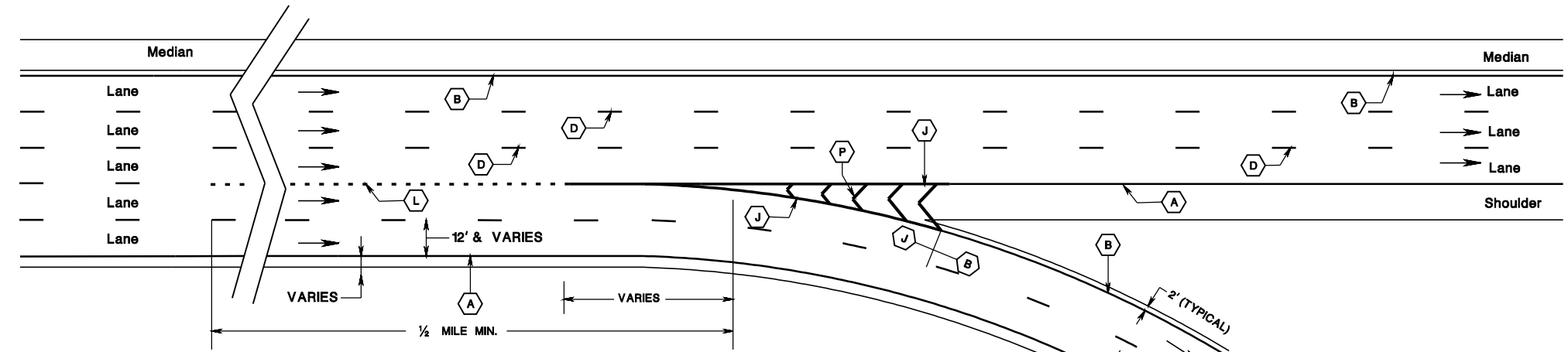


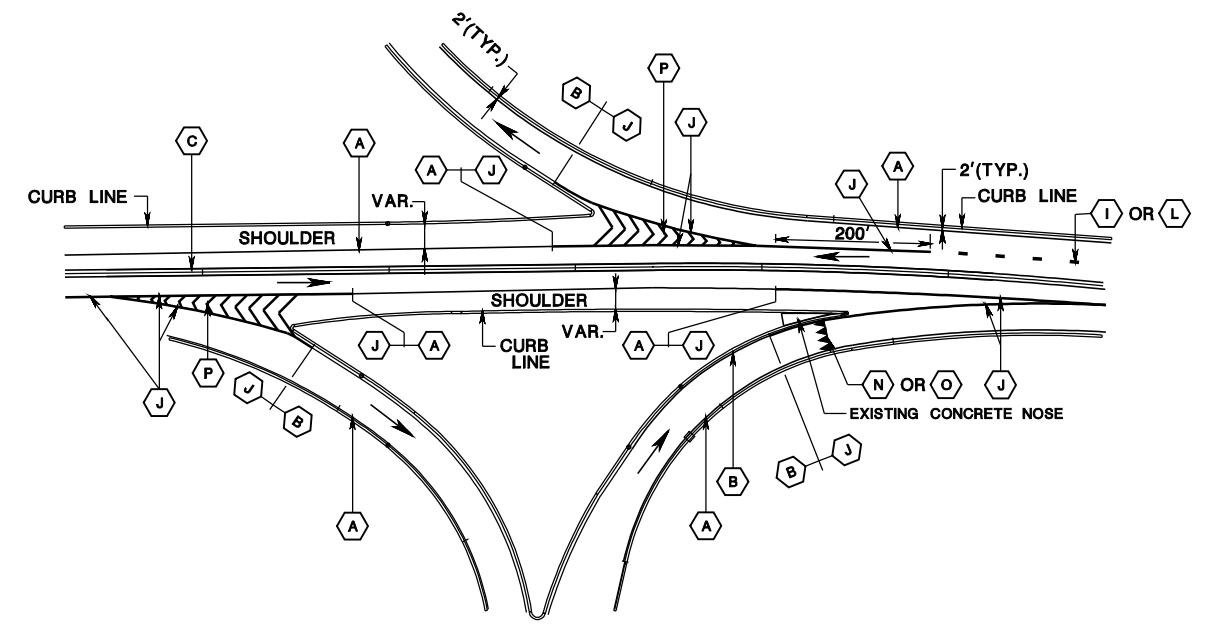
pen table= \\proj007\wva\projects\project\table\roadway\Detail_31x17.tbl
 scale= 617.94946:1.000000
 date= 05-APR-2022 08:48
 D= 000754207

LEGEND

- (A) 4" SOLID WHITE LINE (6" FOR INTERSTATES)
- (B) 4" SOLID YELLOW LINE (6" FOR INTERSTATES)
- (C) 2 - 4" SOLID YELLOW LINES
- (D) 4" BROKEN WHITE LINE (6" FOR INTERSTATES)
- (E) 4" BROKEN YELLOW LINE (6" FOR INTERSTATES)
- (F) 4" DOTTED WHITE LINE
2' LINE WITH 6' SPACE
- (G) 4" DOTTED YELLOW LINE
2' LINE WITH 6' SPACE
- (H) 2 - 4" DOTTED YELLOW LINES
2' LINES WITH 6' SPACE
- (I) 4" DOTTED WHITE LINE
3' LINE WITH 9' SPACE
- (J) 8" SOLID WHITE LINE
- (K) 8" SOLID YELLOW LINE
- (L) 8" DOTTED WHITE LINE
3' LINE WITH 9' SPACE
- (M) 12" SOLID WHITE LINE
- (N) 24" SOLID WHITE LINE
- (O) 24" (b) x 36" (h) YIELD LINES
- (P) 24" SOLID WHITE LINES
SPACED 12' c to c @ 45°
- (Q) 24" SOLID YELLOW LINES
SPACED 12' c to c @ 45°

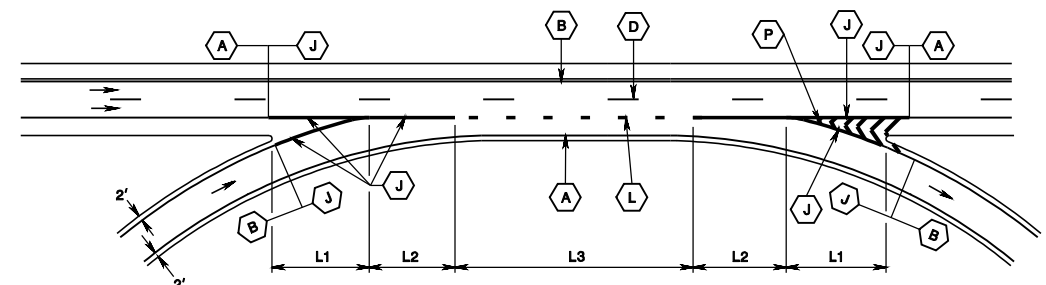


TWO LANE DROP AT AN EXIT RAMP

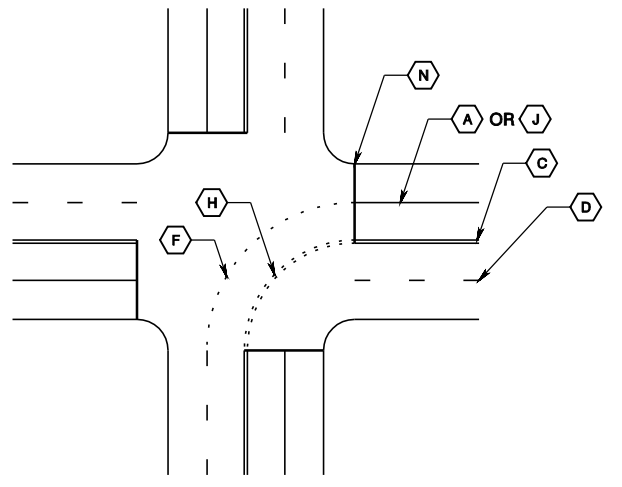


TYPICAL RAMP STRIPING DETAIL

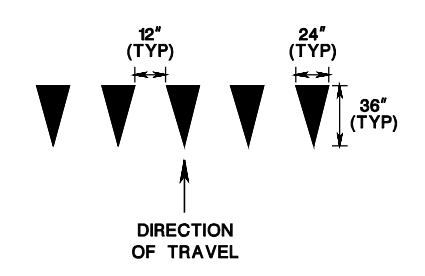
NOTE:
 INSTALL STOP LINES AND YIELD TRIANGLES IN LINE
 WITH THE EXISTING STOP SIGNS AND YIELD SIGNS.



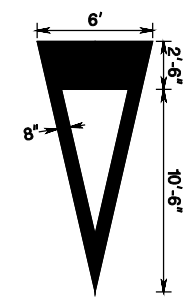
TYPICAL ON-OFF RAMP STRIPING DETAIL



INTERNAL INTERSECTION TRACKING STRIPING DETAIL

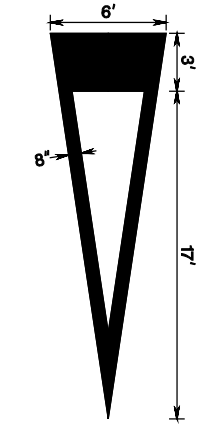


WHITE YIELD LINES DETAIL



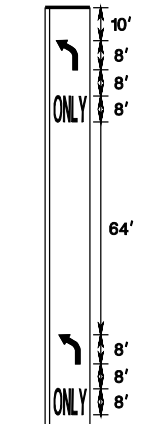
YIELD AHEAD TRIANGLE SYMBOL

**FOR ROADWAYS WITH POSTED SPEED LIMIT LESS THAN 45 MPH



YIELD AHEAD TRIANGLE SYMBOL

**FOR ROADWAYS WITH POSTED SPEED LIMIT OF 45 MPH OR GREATER



TYPICAL TURN LANE MARKING



TYPICAL BROKEN LINE DETAIL

TRAFFIC STRIPES AND MARKINGS

N.T.S.

CD-610-8

NEW JERSEY DEPARTMENT OF TRANSPORTATION

CONSTRUCTION DETAILS

CD-610-8.1

